

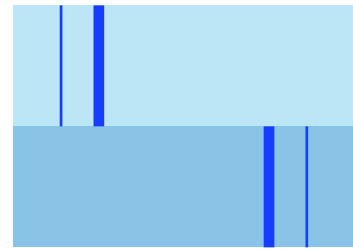
LED Symbol Indicator Ø6mm

Round / Square / Arrow

SKGD06x0x / SKHD06x0x / SKID06x0x

LED Symbol Indicator
 Ø 6 mm round / square / arrow

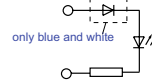
LED symbol indicator for mounting-Ø6 mm with superflat, surface plan lens head. The frosted surface allows a clear on-off contrast and a high light transmission.



Ø 6 mm

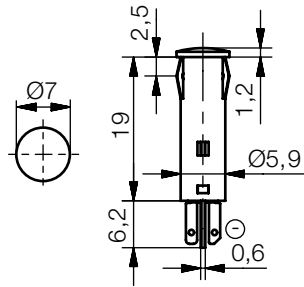
SKGD06x0x / SKHD06x0x / SKID06x0x

Connection: Soldering/plug-in tab 1.5x0.3mm



Round lens head

Type	Luminous intensity 20mA	Part No.	
		12/14V _{DC(AC)}	24/28V _{DC(AC)}
red	40 mcd	SKGD06002	SKGD06004
yellow	30 mcd	SKGD06102	SKGD06104
green	40 mcd	SKGD06202	SKGD06204
blue	700 mcd	SKGD06402	SKGD06404
white	3680 mcd	SKGD06602	SKGD06604



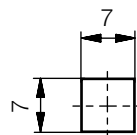
SKGD06x0x



SKID06x0x

Squared lens head

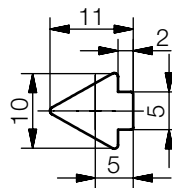
Type	Luminous intensity 20mA	Part No.	
		12/14V _{DC(AC)}	24/28V _{DC(AC)}
red	40 mcd	SKHD06002	SKHD06004
yellow	30 mcd	SKHD06102	SKHD06104
green	40 mcd	SKHD06202	SKHD06204
blue	700 mcd	SKHD06402	SKHD06404
white	3680 mcd	SKHD06602	SKHD06604



SKHD06x0x

Arrow lens head

Type	Luminous intensity 20mA	Part No.	
		12/14V _{DC(AC)}	24/28V _{DC(AC)}
red	40 mcd	SKID06002	SKID06004
yellow	30 mcd	SKID06102	SKID06104
green	40 mcd	SKID06202	SKID06204
blue	700 mcd	SKID06402	SKID06404
white	3680 mcd	SKID06602	SKID06604



For all types page 15
 Specification:
 mounting-hole: Ø 6+0.2 mm

- fixing: snap-in
 Material:
 housing: PC colored transparent
 insulating part: PC
 Option:
 - housing clear transparent
 - also available with high brightness LED
 Accessory:
 - solderless connector cable KDS2

