

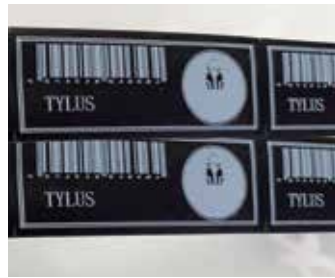
Heat Shrink Tube Printer

- ① Support print heat shrink tube 7mm-30mm diameter
- ② High resolution 300dpi, make words clear.
- ③ High print speed 35mm/s, print quickly.
- ④ Automatic Half-cutting, easy to use.
- ⑤ USB PC connection, import data from excel, make tubes in bulk on PC.



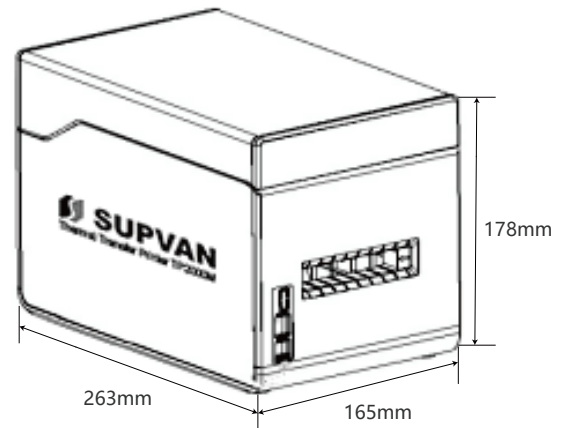
TP2000M

Application



Specification

Project	Parameter
Model	TP2000M
Printing method	Thermal transfer
Resolution	300dpi
Display	No LCD devices
Printing speed	35mm/s
Cutting	Automatic Half-cutting
Max printable range	55mm
Ribbon Spec	62mm*45m, single color
Ribbon Color	Black, White, Golden
Heat Shrink Tube Size	Φ7.0-Φ30mm
Heat Shrink Tube Color	White, Yellow, Black
Connection Interface	USB 2.0 Full speed
Working temperature	15°C~35°C
Working humidity	15%-80% No condensation
Power Supply	15V 3A
Outer Dimensions	263mm*165mm*178mm
Weight	2.4KG
OS	Win8 / Win7/ Vista/ Windows XP/Win10 Compatible drivers/APPs are available on website once product publish
Warranty	Whole Printer 1 year
Consumables	Tube Support 、 Ribborn cassette



Included Items



Packing box x 1



TP2000M Printer x 1



Ribbon x 1



USB cable x 1



Power adapter x 1









Power line x 1



CD-ROM

Consumables of TP2000M

TP2000M

Printer	Picture	Consumable Type	Model No.	Specification
 <p>TP2000M</p>		Black ribbon 	TP-R453BKE	55mm*45m/roll
		White ribbon 	TP-R453WTE	55mm*45m/roll
		Golden ribbon 	TP-R453GLE	55mm*45m/roll
		Tube Support	-	Accessory for Heat shrink tube

JHB Branch

Mimic Components, Address: 5 Ramsay Street, Booyens, 2091, Johannesburg. Switchboard: +27(0)11-689-5700 | WhatsApp: 071-979-9999
 PO Box 38493, Booyens, 2016, Johannesburg, South Africa. Email: info1@mimiccomponents.co.za | Website: www.mimiccomponents.co.za

Cape Branch

Mimic Cape. Address: Unit 41A, Stella Park, 57 Stella Road, Montague Gardens, 7441, Cape Town. Switchboard: +27(0)21-551-8185
 WhatsApp: 071-979-9999. Po Box 36955, Chempet, 7442, Cape Town, South Africa. Email: info@mimic-cape.co.za | Website: www.mimic-cape.co.za