

Cold Chain Dispensable Data Loggers & Fridge Freezer Sensor Kit

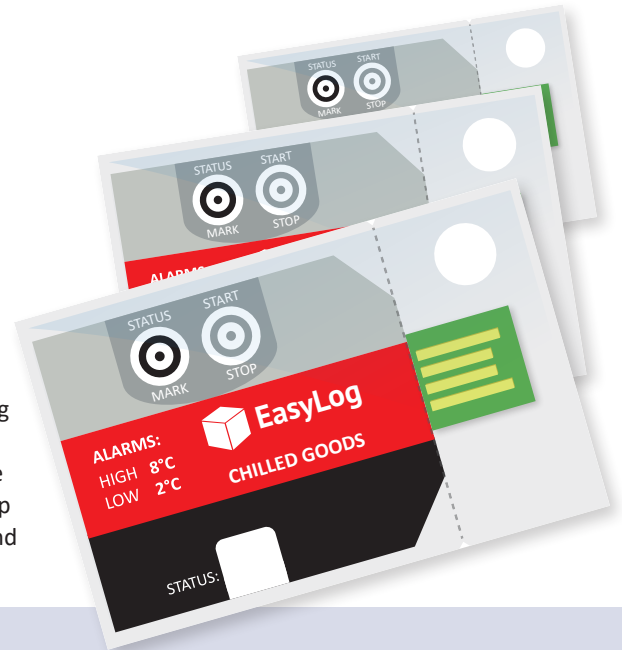
EL-PDF-1

Software Free, Temperature Data Logging Solutions



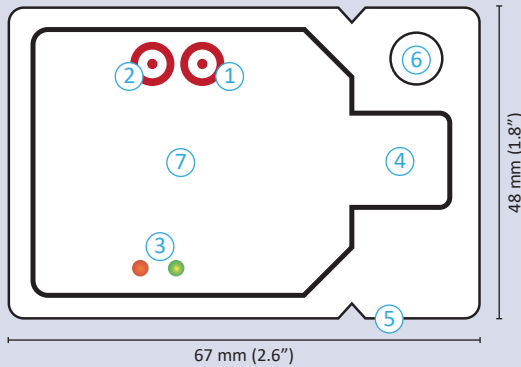
- 4 data loggers for monitoring Chilled Goods, Frozen Goods Ripening Goods and Ambient Pharmaceutical.
- Custom cumulative alarm versions of each logger available if required.
- No set-up required. One button press-to-start logging.
- Pre-configured with appropriate sample rates, alarm thresholds and cumulative alarms for each application.
- No software required. Results appear in an automatically generated PDF file.

Each of the four PDF loggers comes pre-configured for use in your particular application – simply press the Start button to begin logging. Pressing the Status button will light up the status LEDs to give a quick indication of whether the temperature has exceeded an alarm condition at any point. Once your session has been completed, press and hold the Start/Stop button to stop the log, tear open the IP67-rated plastic wallet to reveal the USB connector and plug into your PC. Copy the file off the device as if it were a memory stick.



YOUR EL-PDF-1

- 1 Start/Stop button
- 2 Status/Mark button
- 3 Status LEDs
- 4 USB connector
- 5 Tear to open
- 6 Mounting point
- 7 Model type



CUSTOM CONFIGURATIONS

This unit can be quickly customised for use in multiple markets. If you have a specific monitoring application, call us today.

SPECIFICATIONS

Measurement range	-30 to +60°C (-22 to +140°F)
Accuracy (overall error)	±0.5°C maximum (±1°F)
Resolution	0.1°C (0.1°F)
Battery Life	12 months (minimum)
IP Rating	IP67*
Readings	32,600

* The data logger is protected against moisture to IP67 standard when housed in an EL-CC-BAG or equivalent.

INCLUDED IN THE BOX

EL-PDF-1 X10 Data Loggers with integral battery

ACCESSORIES

EL-CC-BAG Pack of 5 waterproof bags for data logger re-use.

MODEL SPECIFIC

	Chilled Goods	Frozen Goods	Ripening Goods	Ambient Pharma
High Alarm Level	8°C	-16°C	14°C	25°C
Low Alarm Level	2°C	-20°C	12°C	8°C
Cumulative Alarms Level	Available Upon Request	Available Upon Request	Available Upon Request	Available Upon Request
Logging Interval	10 minutes (220 days)	10 minutes (220 days)	10 minutes (220 days)	10 minutes (220 days)
Part Number	EL-PDF-1-001 PK10	EL-PDF-1-002 PK10	EL-PDF-1-003 PK10	EL-PDF-1-004-PK10

JHB Branch

Mimic Components, Address: 5 Ramsay Street, Booyens, 2091, Johannesburg. Switchboard: +27(0)11-689-5700 | WhatsApp: 071-979-9999
PO Box 38493, Booyens, 2016, Johannesburg, South Africa. Email: info1@mimiccomponents.co.za | Website: www.mimiccomponents.co.za

Cape Branch

Mimic Cape. Address: Unit 41A, Stella Park, 57 Stella Road, Montague Gardens, 7441, Cape Town. Switchboard: +27(0)21-551-8185
WhatsApp: 071-979-9999. Po Box 36955, Chempet, 7442, Cape Town, South Africa. Email: info@mimic-cape.co.za | Website: www.mimic-cape.co.za

Fridge/Freezer Temperature Probe Installation Kit



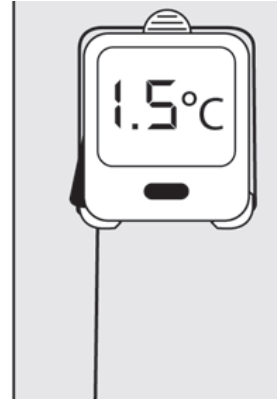
Kit Includes:

1x Seal, 1x Magnetic tie, 4x Wire ties, 2x Probe clips,
1x Adhesive pad

Installation Instructions

1 Position Device

Attach your device and bracket to the fridge using the adhesive pad.

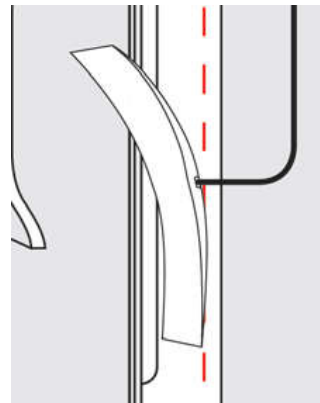


2 Attach Cable Entry Seal

Clean and dry the area where the cable will run through the door seal.

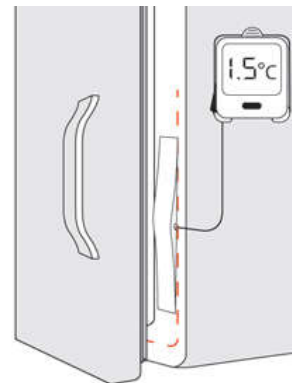
Peel off one half of the cable entry seal backing tape and carefully stick it in position, in line with the door seal.

Note: It is often best to run the cable through the hinged side of the door (picture shows open side for sake of clarity).



3 Insert Probe Cable

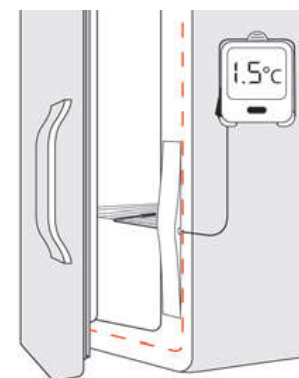
Thread the cable through the cutout on the seal, peel off the other half of the backing tape and stick the cable entry seal firmly in place.



4 Positioning

Using the wire ties, magnetic tie and adhesive clips, position the probe tip in the desired measurement location (away from fridge walls is recommended).

Excess cable should be coiled and stored inside fridge.



Note: Clean and dry surfaces before applying adhesive clips.